

SpotGamma Canvas User Guide

Last updated: 26 June 2026

Appendix

[1. Canvas Overview](#)

[2. Key Features](#)

[3. Grouping](#)

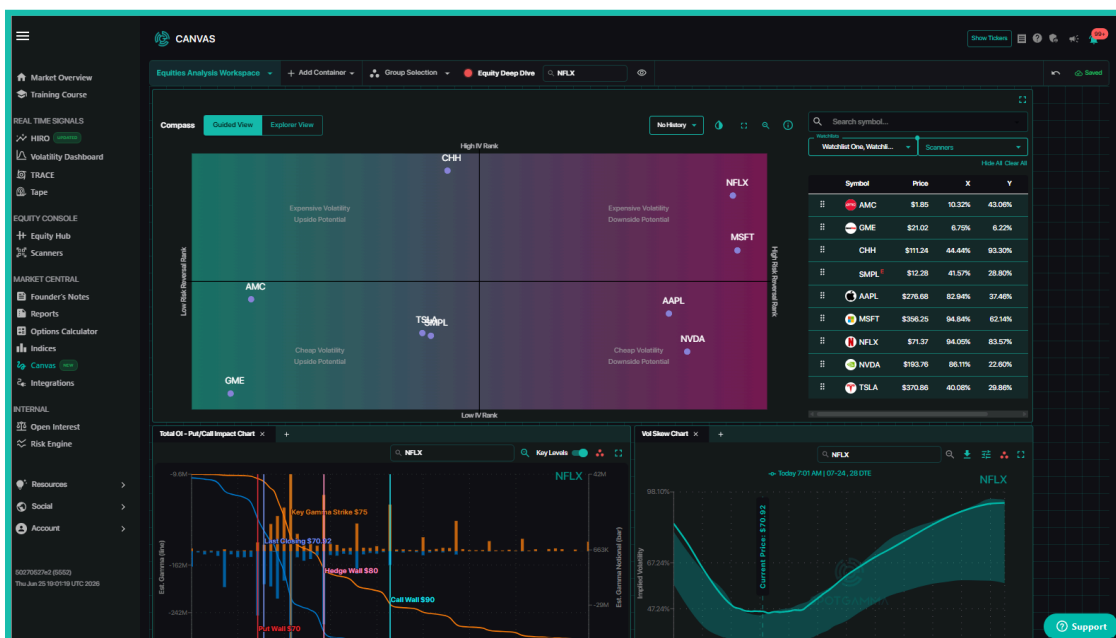
[4. Using Canvas](#)

[5. Canvas FAQ](#)

Canvas Overview

Canvas provides a fully customizable layout to all SpotGamma subscribers. Within Canvas, you can arrange SpotGamma charts, tables, and graphs into a personalized dashboard that reflects your unique trading approach.

Whether you are focused on a single name or monitoring the broader market, Canvas keeps everything you need in one place. Canvas can be accessed in the Market Central section of the left navigation menu.



Key Features

Canvas is built using three foundational pieces: Workspaces, Containers, and Components. Together, these three configurable elements can be used to create dynamic workspace pages that match how you use SpotGamma.



Workspaces

A Workspace is a configurable page where you can customize and arrange different SpotGamma charts into the layout you prefer. Any changes you make within Canvas are automatically saved to the current workspace, so you can return to that same view in the future.

You can create more than one Workspace and page between them, which makes it easy to keep separate setups for different trading approaches. In the top left, the Workspace dropdown allows you to create new workspaces, view previously created workspaces, or delete workspaces you no longer use. See two examples of different workspace setups in the [Using Canvas](#) section below.

Containers

Containers are the designated areas within a workspace where SpotGamma charts are displayed. Each container is moveable, and the borders for any container are adjustable, so you can configure a container to meet your personal preference.

Each container can hold between one and five SpotGamma charts or tables. When creating a new container, there are two options to choose between:

- **Tabbed Container:** This option allows you to add up to 5 components to that container, which are selectable as tabs across the top of the container.
- **Single Component:** When selected, a *Single Component* container allows just one chart within that container. This maximizes the space available, which may be useful when viewing larger charts, such as TRACE or Compass.

To remove a container, select the red **delete** icon in the container's top right corner.

Pro Tip: Use single-component containers for the charts you stare at most, and group less-critical charts together as tabs inside a shared container to save room.

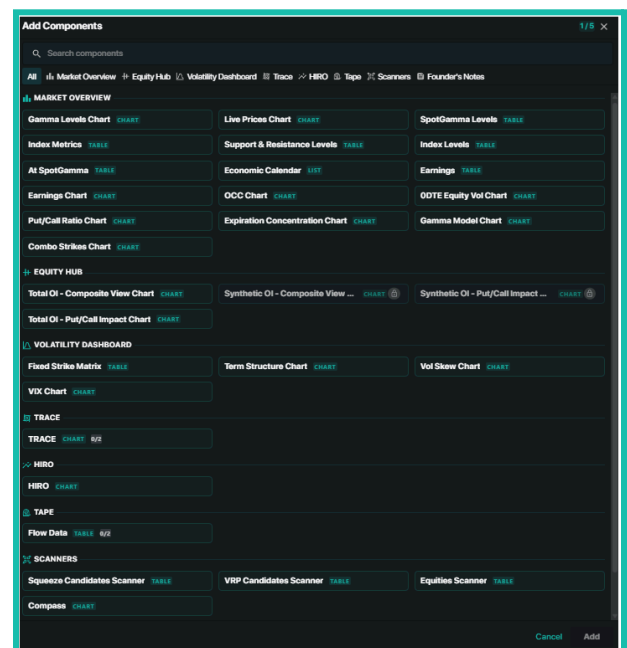
Components

Components are the individual building blocks of Canvas, consisting of SpotGamma charts, tables, and graphs. SpotGamma's HIRO Indicator, TRACE, Tape, Compass, Founder's Notes, Volatility Dashboard charts, and Equity Hub charts can all be added as components within Canvas.

You can add new components to your Canvas Workspace in two ways:

- For a *Tabbed Container*, click the **+** icon at the top of the container.
- With a *Single Component* container, click the **+ Add Component** button.

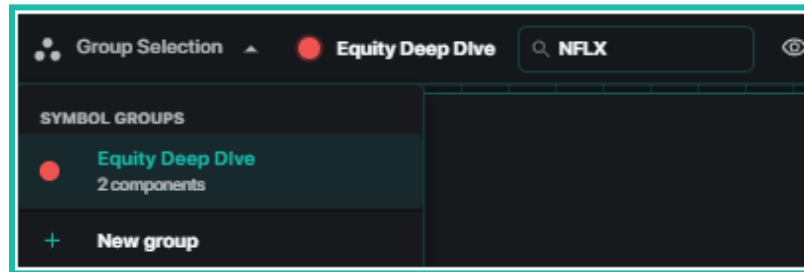
From the *Add Component* window shown on the right, you can select between 30+ different components to add to your view. To remove a component from a tab, click the **X** button next to the chart's name at the top of the container.



Note that HIRO, TRACE, and Tape can only be added twice to the same workspace.

Grouping

The Grouping function within Canvas links components together to reflect the same underlying ticker. Changing the ticker in any one grouped component will change the ticker for all other components in that group, allowing you to scan through multiple names quickly.

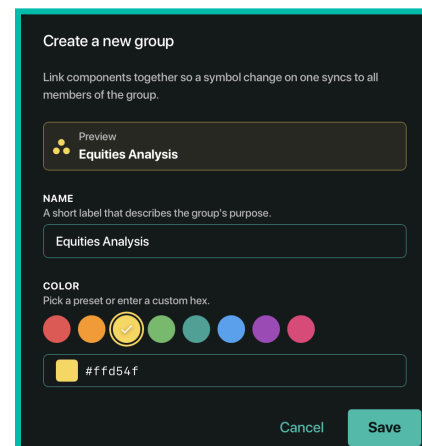


Groups are managed at the top of the Canvas window under **Group Selection**, where you can create and manage groups. Each group must have a name and an assigned color, which will display in the top right of any grouped component.

To switch the ticker displayed for a selected group, type in a new ticker at the top or select one from the watchlist icon to the right. You can add any single-stock chart in Canvas to a group by selecting the Group icon in the top right of the component.

Below are a few important points about how Groups work:

- Changing the ticker in any grouped component updates the ticker for every other component in that same Group.
- Grouping is optional, so components do not need to belong to a group.
- A component can only belong to one Group.
- Only SpotGamma charts pointed at a single ticker can be grouped, such as Equity Hub charts. Components that look at multiple tickers, such as Compass, cannot be grouped.



Pro Tip: Grouping is ideal when you want to analyze multiple stocks quickly from several different angles at once – such as viewing Equity Hub for key levels and the Volatility Dashboard to understand the impact of volatility on options pricing.

Using Canvas

Canvas can be used in multiple different ways to streamline your analysis using SpotGamma tools. Because Canvas layouts are fully customizable and saved as Workspaces, you can build a dedicated setup for each part of your workflow and switch between them as your focus shifts. Below are two sample Canvas setups that may be useful for different types of trading.

S&P 500 Workspace

If you trade SPX options or ES futures, this layout brings you intraday data on dealer positioning, options hedging pressure, and volatility expectations for the S&P 500.

- **HIRO** shows real-time options hedging pressure. For tracking the impact of options on the S&P, we suggest you use the S&P 500 symbol, which aggregates options pressure across SPX, SPY, XSP, and ES.
- **Volatility Skew** provides current implied volatility data across strikes for a given expiry, which can be used to gauge options pricing vs. historical values.
- **TRACE** displays a heatmap and strike plot showing dealer positioning updated every minute. This shows you where hedging pressure is likely to emerge across price and time — creating zones of support, resistance, and volatility.

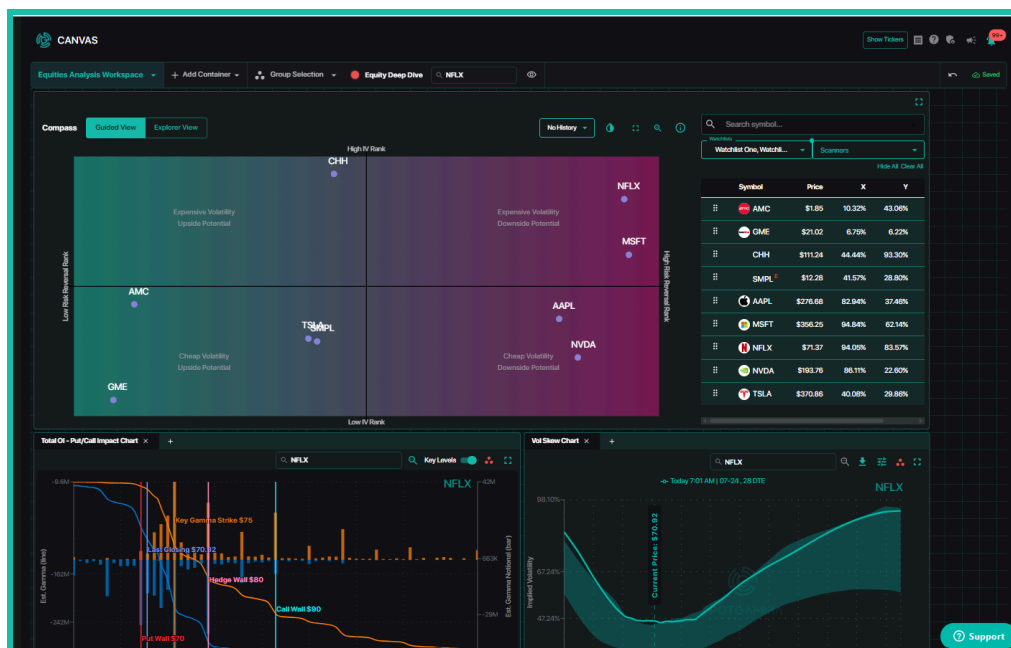


Equities Analysis Workspace

When looking for trade opportunities across multiple tickers, Canvas allows you to both scan the broader market and dive into specific names of interest. The below layout can help you find individual stocks with interesting setups, and evaluate ways to potentially trade those names.

- **Compass** displays directional and volatility positioning for multiple tickers at a time. Names can be added individually using the search bar, pulled in from your watchlists, or selected from the scanners dropdown on the right.
- **Equity Hub Put & Call Impact** from the Total OI model shows key levels and critical strikes that function as support or resistance, showing you where price movement for the selected stock may stall or reverse.
- **Volatility Skew** provides insight into implied volatility, which can be used to measure options pricing. This can help you gauge the market's expectations for future price movement, helping you evaluate potential trade setups.

Add **Equity Hub Put & Call Impact** and **Volatility Skew** components to the same group so you can update both charts simultaneously when moving between tickers.



Canvas FAQ

Below are questions we anticipate from users regarding how to use Canvas. For any additional questions, email SpotGamma support at info@spotgamma.com.

Where do I find Canvas?

Canvas is located under Market Central in the left navigation menu of the SpotGamma dashboard.

What's the difference between a component and a container?

In Canvas, a component is an individual chart, table, or graph. A container is the designated area on the page where components sit. A container can hold a single component, or up to five components which are selectable as tabs.

How do I put more than one chart in the same container?

For multi-component containers, you can select the **+ icon** at the top of the container to add a new chart or graph. The new component is then added as a tab. If you'd rather give a chart the entire container, create a single-component container.

Can I save more than one layout?

Yes, any layout you design is saved as a separate Workspace. You can page between Workspaces using the dropdown at the top of the Canvas page.

What does Grouping do?

Grouping links single-ticker components together so that they display the same ticker. Changing the ticker in one grouped component will change the ticker for every component in that same Group. A component can belong to only one Group.

Are there limits on how many components I can add?

Most components have no set limit. HIRO, Tape, and TRACE are limited to two instances per Workspace. These tools process a large volume of real-time data, and the cap keeps your Canvas page running smoothly.

Which components can be grouped?

Components that focus on a single ticker can be grouped, such as the HIRO chart. Charts displaying multiple names, such as Compass, cannot be added to a Group.